



THE SMART CHOICE IN APPLIED FLOORING SYSTEMS

- One (1) hour fully cured & ready for full traffic
- Hardwearing & long-life anti-slip safety flooring
(Exceeds Aust. Standards for wet pedestrian traffic)
- Seamless & resilient flooring.
- Highly abrasion, ultra-violet & chemical resistant
- Workmanship & materials - 5 year guarantee



Aquatic & Sports / Recreation

MONOTEK® MMA resin based, trowel-applied flooring systems, are self-levelling & rapid setting. MONOTEK® flooring is highly resilient, and as such can be installed with only the minimum of expansion joints required. This in-built resinous resilience & flexibility also ensures that it is able to withstand heavy impacts & even substantial substrate movement without compromising the hygienic seal of your flooring surface. MONOTEK® can be easily & rapidly repaired if damaged & anti-slip re-instated when worn in very heavy traffic areas.

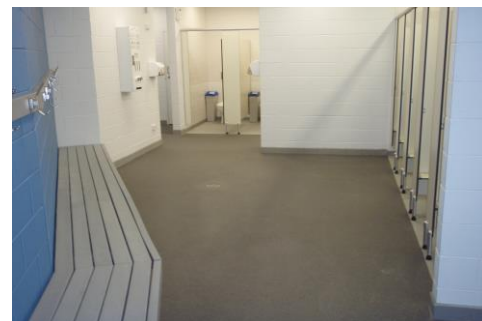
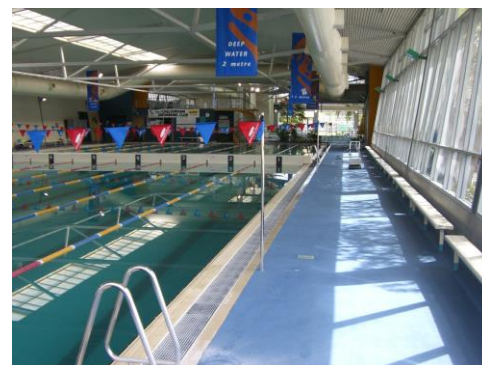
MONOTEK® flooring systems are specifically designed with the commercial aquatic & recreation / sport industry in mind, as they **TOTALLY CURE IN ONE (1) HOUR**, so facility shutdown time can be kept to the absolute minimum. For example, in an operational commercial swimming pool & recreation centre/ or toilet & changeroom application, we could commence works after the last swimmers have left, have all preparation & installation completed (approx 50m² each night.), ready for full traffic before the early swimmers arrive the next morning. Obviously in new construction, we can quickly complete large areas within tight construction schedules, allowing for other works & trades to rapidly re-commence.

MONOTEK® flooring provides a hygienic & safe flooring surface (anti-slip can be varied to suit various areas & exceeds the Australian Standards for wet pedestrian traffic), which is highly chemical, abrasion & UV resistant, yet still highly aesthetically pleasing. MONOTEK® flooring systems can be applied directly over existing sound ceramic tiles or concrete/ cement screed and also can be formed vertically into coving/ skirting for wall/floor junctions & kerbing. Finally, MONOTEK® is available in a wide range of coloured sand / mineral (granite – look) & multi-coloured chip/ flake (MonoChip®) finishes, so it will compliment any contemporary design.

Typical previous areas of application in the aquatic & recreation / sports industry for MONOTEK® flooring have been in areas such as –

- SWIMMING POOL & SPA SURROUNDS / CONCOURSE & FOYER AREAS
- TOILETS & CHANGE ROOMS
- PLANT ROOMS & SERVICE AREAS
- KITCHENS, CANTEENS & COMMERCIAL FOOD PREP AREAS
- BAR AREAS & COOL ROOMS/FREEZERS

MONOTEK® flooring systems are exclusively supplied & applied, Australia-wide by D.P.J. Coating Systems Pty Ltd (100% Australian owned, family business, established in 1977), and come with an "excuse proof" – 5 year guarantee of performance & materials. We never use sub-contractors to apply MONOTEK® flooring systems.



Innovative protective coating solutions since 1977

Victoria: (Head Office) - 2 / 25 Jersey Road, Bayswater. Vic 3153

Ph: (03) 9720 8777

E: admin@dpj.com.au

www.monotek.com.au